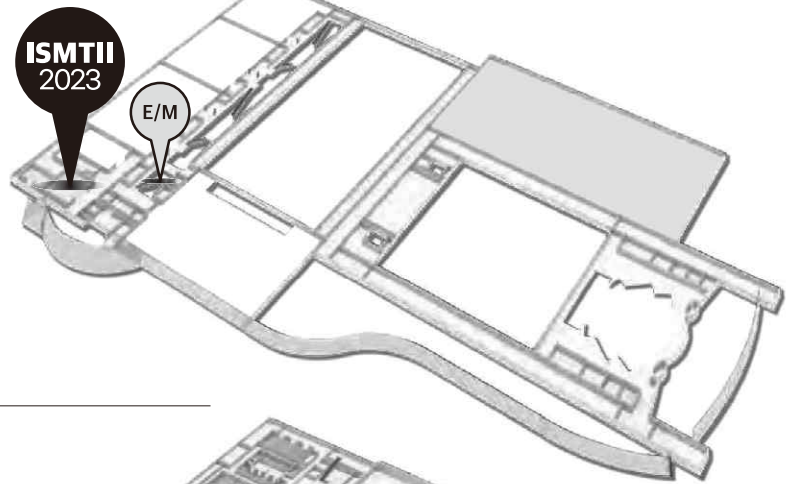


Floor Map (1F ↔ 3F ↔ 4F)

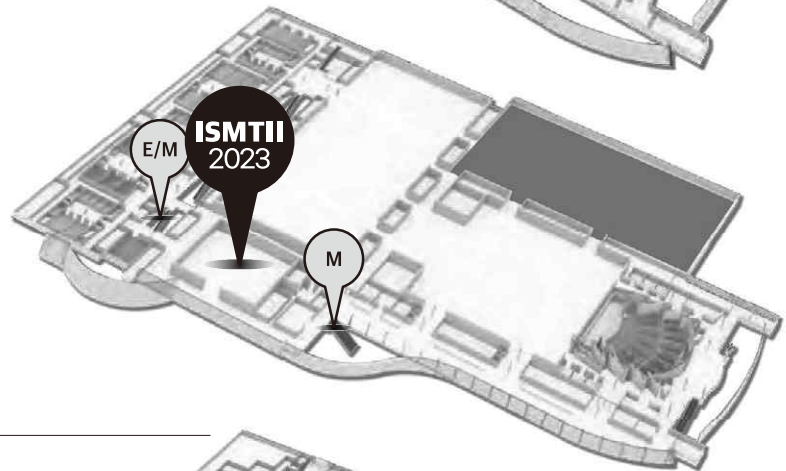
4F

- Rm. 402 : Welcome Reception
- E/M : Elevator / Moving Stair



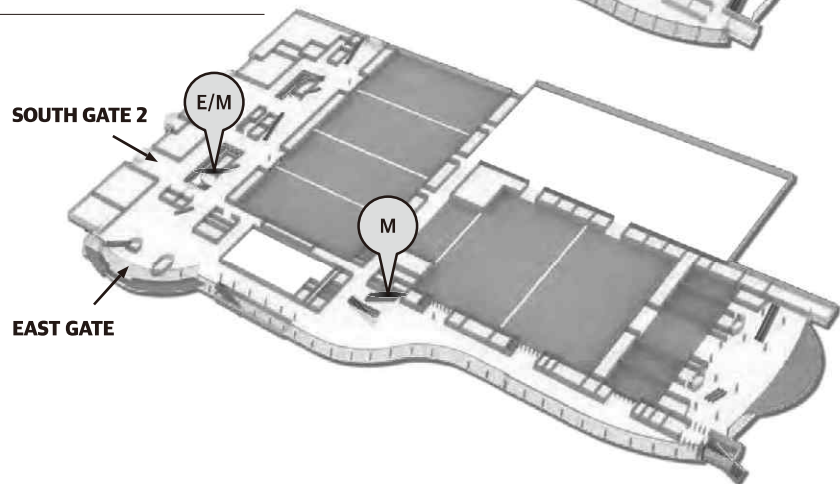
3F

- Conference Room E : ISMTII 2023
- M : Moving Stair
- E/M : Elevator / Moving Stair

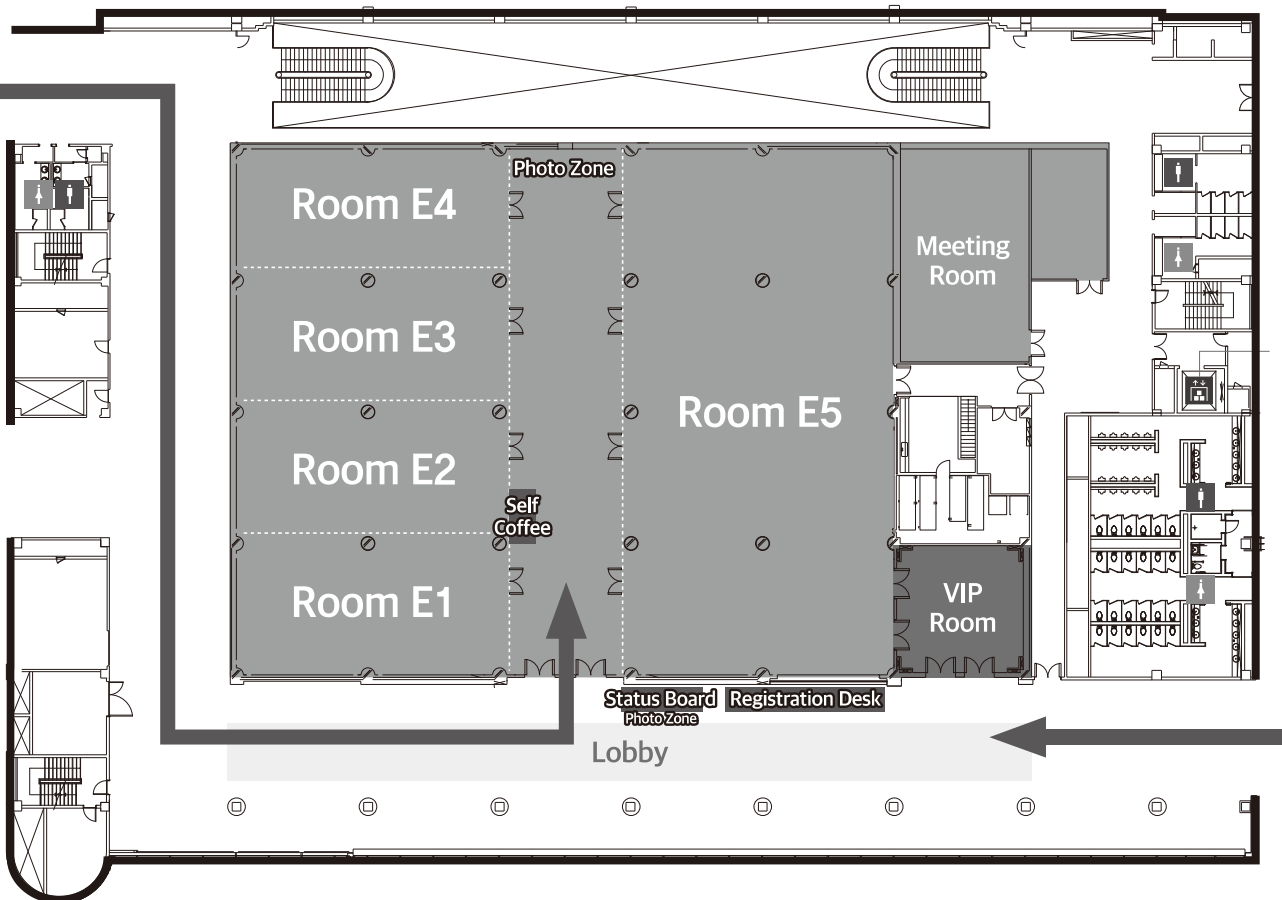


1F

- M : Moving Stair
- E/M : Elevator / Moving Stair



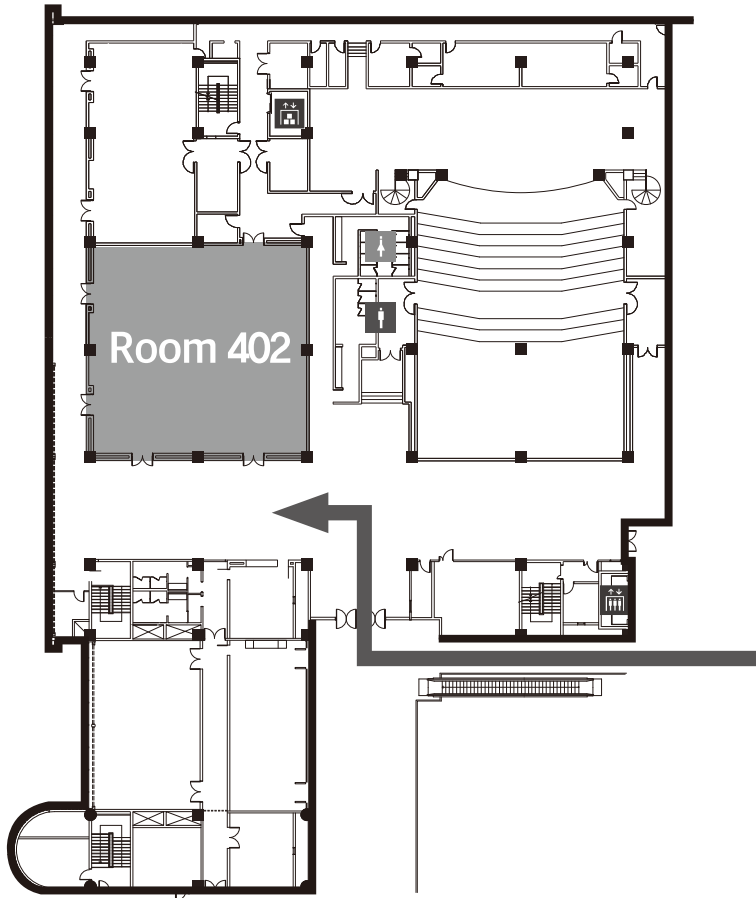
Floor Map (3F, Conference Room E)



3F

- **Lobby** : Registration (September 18 (Mon.) - 19 (Tue.))
Poster Presentation (September 18 (Mon.))
- **Room E1~5** : Opening Ceremony
Keynote Session
Oral Presentation
ICMI Member Meeting

Welcome Reception



4F

- Room 402 : Welcome Reception
Registration (September 17 (Sun.))